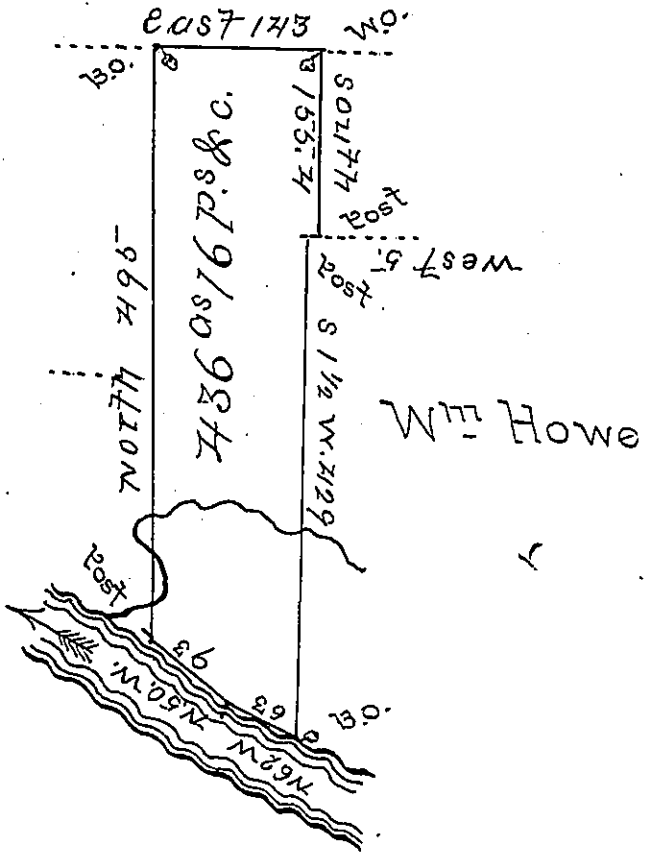


John Mc Tate

J. Peoples



Draft of a tract of land situate in Sugar creek township, Venango county, west of and adjoining the Allegheny River, about five miles from the town of Franklin, surveyed 5th August 1822 for Robert Alcorn, on improvement & settlement.

I do hereby certify the foregoing to be a correct copy of the original entry in the Survey Book of Venango county. In witness whereof I have hereunto set my hand this 18th day of July 1836.

Richd Arwin D.S.

John Taylor Esq^t
Surveyor General of Pa }
}

IN TESTIMONY that the above is a copy of the original remaining on file in the Department of Internal Affairs of Pennsylvania, made conformably to an Act of Assembly approved the 16th day of February, 1833, I have hereunto set my Hand and caused the Seal of said Department to be affixed at Harrisburg, this—second—day of—January—1900.

James W. Hitt
Secretary of Internal Affairs.